

## AIR/GROUND SIMULATION OF TRAJECTORY-ORIENTED OPERATIONS WITH LIMITED DELEGATION

*Thomas Prevot, Todd Callantine, Jeff Homola, Paul Lee, Joey Mercer  
San Jose State University/NASA Ames Research Center  
tprevot, tcallantine, jhomola, plee, jmercerc@mail.arc.nasa.gov, Moffett Field, CA*

*Everett Palmer, Nancy Smith,  
NASA Ames Research Center  
epalmer, nsmith@mail.arc.nasa.gov, Moffett Field, CA*

### Abstract

An air/ground simulation of Trajectory-Oriented Operations with Limited Delegation (TOOWiLD) was conducted at NASA Ames Research Center in September 2006. Four radar-certified air traffic control (ATC) specialists in the Airspace Operations Laboratory (AOL), eight glass cockpit pilots in the Flight Deck Display Research Laboratory (FDDRL), and additional “ghost” pilots and controllers operated a heavy eastbound arrival push into Louisville’s Standiford airport (SDF) with high density crossing traffic. An arrival management system scheduled aircraft along Continuous Descent Approaches (CDAs) and data linked arrival information to participating aircraft automatically throughout the simulation.

The 2x3 test matrix varied two flight deck conditions: (1) *with and* (2) *without airborne spacing*, over three ATC workstation conditions: (1) *current day*, (2) *advanced ATC scheduling and spacing tools*, and (3) *the same tools integrated with controller pilot data link communication*.

The process of automatically data linking arrival messages to participating aircraft based on a runway schedule proved to be very effective in all conditions. Flight deck-initiated speed changes to meet the CDA speed schedule and lead aircraft assignments were acceptable to pilots and controllers. Airborne spacing reduced the mean and the variance of the inter-arrival spacing on final approach, consistent with prior research. Controller scheduling and spacing tools improved handling of non-participating aircraft which did not receive the arrival information.

The research is sponsored by the Super Density Operations element of NASA’s NGATS Airspace program and coordinated with the US merging and spacing team, with participation by the FAA, UPS, MITRE, and NASA.

### Introduction

The Joint Planning and Development Office (JPDO) has been established to transform the U.S. air transportation system by 2025. According to JPDO, the Next Generation Air Transportation System (NGATS) will be more flexible, resilient, scalable, adaptive, and highly automated than today’s system – meeting up to two to three times current demand. The NGATS includes security, safety, and efficiency of passenger, cargo and aircraft operations. Aircraft will be able to use information technology in a more robust way, with enhanced capabilities in the cockpit, better navigation and landing capabilities, and far more comprehensive and accurate knowledge of weather and traffic conditions in real time. [1, 2]

Similarly, the European Commission (EC) launched the Single European Sky ATM Research (SESAR) program, to achieve a future European ATM System for 2020 and beyond, which can meet following objectives: Relative to today’s performance enable a 3-fold increase in capacity while also reducing delays both on the ground and in the air; Improve the safety performance by a factor of 10; enable a 10% reduction in the environmental effects; And provide ATM services at a cost to the airspace users which is at least 50% less. [3]

Both initiatives aim at drastic air traffic system improvements that can at least double capacity in the next twenty years. Fundamental laboratory research is required to define and develop a transformed system that can meet these objectives. In parallel, the real world air traffic management systems are evolving such that, many near- to medium-term initiatives will make use of advanced technologies to achieve incremental benefits. Aligning the necessary near-term evolutionary progress with the long-term

transformation of the air transportation system will be a major challenge.

The research presented in this paper is a laboratory simulation to assess -for a specific context- the future direction and far-term potential of some major near-term initiatives: airborne merging and spacing, continuous descent arrivals, trajectory-based arrival management, decision support tools for air traffic controllers, and data link.

## Background

The framework for the simulation is a concept under investigation at NASA Ames Research Center called 'trajectory-oriented operations with limited delegation' (TOOWiLD). The underlying principles for combining 4D trajectory-based operations with relative spacing were discussed at the Air Traffic Management R&D seminar in 2003 [4, 5]. The concept was further refined to achieve efficiency and capacity benefits through a combination of time-based traffic flow management, trajectory-oriented operations, and delegation of spacing tasks to flight crews of appropriately equipped aircraft [6, 7]. A possible far-term path for this concept entitled 'Co-operative Air Traffic Management' that includes additional new technologies and modified pilot and controller roles and responsibilities was presented at the ATM R&D seminar in 2005 [8].

One of the key features of the concept is to enable efficient low power idle descents for as many arriving aircraft as possible in a highly

complex traffic environment. It is closely related to near-term efforts at many airports worldwide that are introducing Continuous Descent Arrivals (CDA) to reduce fuel consumption, noise and emissions. Flying CDAs in low density environments is generally considered feasible with current day technologies. In contrast, conducting CDAs routinely in high density airspace requires more advanced solutions. Current approaches include improved arrival management tools and procedures for controllers, data linking required times of arrival to the runway, data linking dynamic route changes, and conducting airborne merging and spacing along the CDAs [9-13].

Research on time-based flow management and trajectory-oriented metering has demonstrated improved compliance with metering constraints and better situation awareness for controllers at high and low altitude merge points [14, 15]. Little research has been conducted on the integration with CDAs or runway metering schemes. Air traffic service providers have already installed arrival management systems, such as the CTAS Traffic Management Adviser (TMA) in the US.

Research on airborne merging and spacing has shown feasibility in arrival problems and indicated potential benefits in reducing the spacing variability on final approach [16, 17, 18]. Requirements for airborne spacing are currently determined by the Requirements Focus Group. The United Parcel Service (UPS) airline has started the process of equipping their fleet with airborne merging and spacing algorithms hosted in the electronic flight bag (EFB) and plans on initial field trials in 2007.

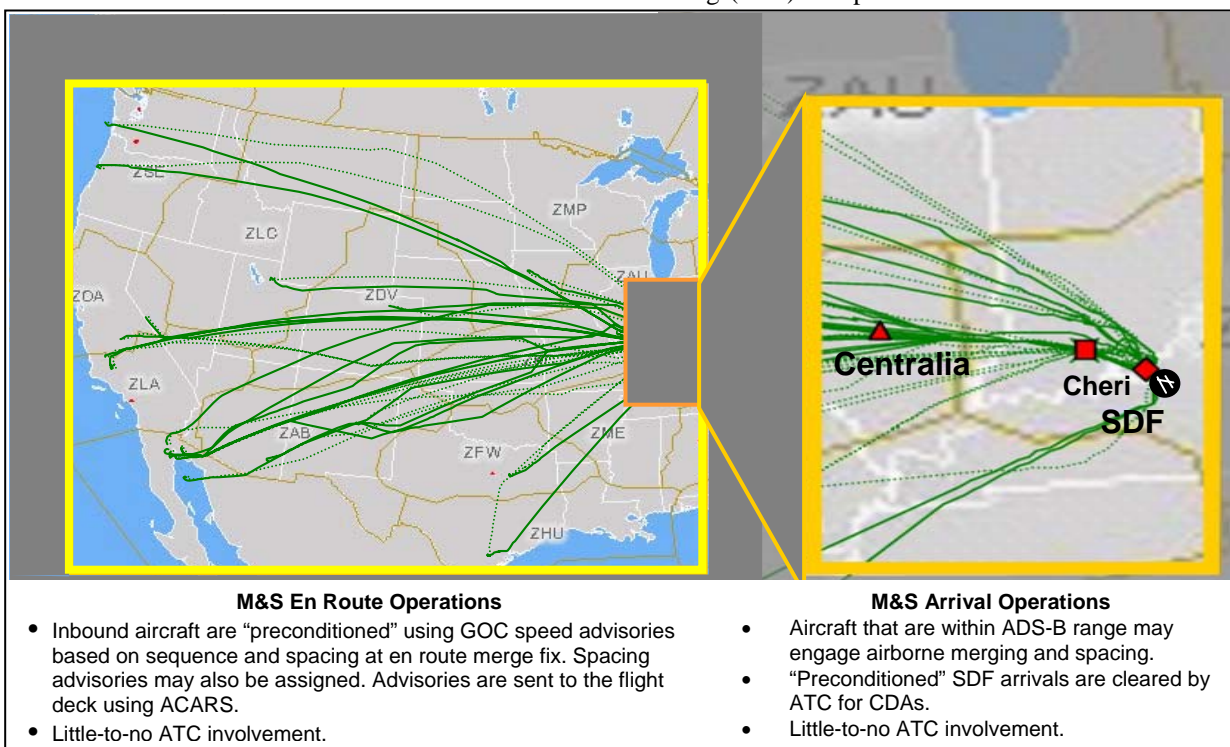


Figure 1. M&S concept for en route and arrival operations.

The Merging and Spacing Group (M&S group) has been formed in the US with involvement of the FAA, UPS, MITRE and NASA to plan and coordinate the near- to medium term merging and spacing research and development efforts in conjunction with the FAA's Surveillance and Broadcast Services office.

Figure 1 illustrates the near-term concept pursued by the M&S group for managing eastbound late night UPS arrivals into Louisville Standiford airport. The M&S operations depicted in Figure 1 can be viewed as a near-term implementation of trajectory-oriented operations with limited delegation (Figure 2). Time-based traffic management is initially conducted at the UPS Global Operations Center (GOC) based on 4D trajectories along Continuous Descent Arrivals. Relative spacing is engaged when aircraft are within ADS-B range and in an appropriate position to do so. The initial spacing information will be data linked from the GOC via ACARS to the aircraft.

Field tests were conducted in 2006 at Louisville to test a concept for en route metering by sending speed assignments from UPS-based arrival management tools and follow-on tests adding initial airborne merging and spacing capabilities are expected to be conducted in 2007. This near-term application will initially be conducted in low density environments with a single merge point. The simulation described in this paper looks beyond this important near-term phase and investigates these kinds of operations in high density airspace with multiple traffic flows and merge points.

## Method

An air/ground simulation of a site-specific concept implementation with pilots and controllers in the loop was conducted in September 2006 in the Airspace Operations Laboratory (AOL) and the Flight Deck Display Research Laboratory at NASA Ames Research Center [18, 19]. The 2x3 test matrix varied two flight deck conditions: (1) *with and* (2) *without airborne spacing*, over three ATC workstation conditions: (1) *current day*, (2) *advanced ATC scheduling and spacing tools*, and (3) *the same tools integrated with controller pilot data link communication*.

### Site-specific implementation

The "site-specific" implementation of the TOOWiLD concept, prototyped for the simulation, assumed as its operational context the airspace, the fleet capabilities, air-ground procedures, traffic patterns and airline-centric arrival flow management that are being developed by the M&S group.

Therefore, for the simulation it was assumed that UPS as the dominant air carrier at the airport had a 100% ADS-B out equipage with a majority of its aircraft (all Boeing 757 and 767) equipped for airborne merging and spacing. It was further assumed that ACARS data link messages could be sent to all UPS aircraft from a ground-based arrival management system located either at the Global Operations Center or an appropriate Air Traffic Service Facility. No data link connection between the arrival management system and non-UPS aircraft was assumed.

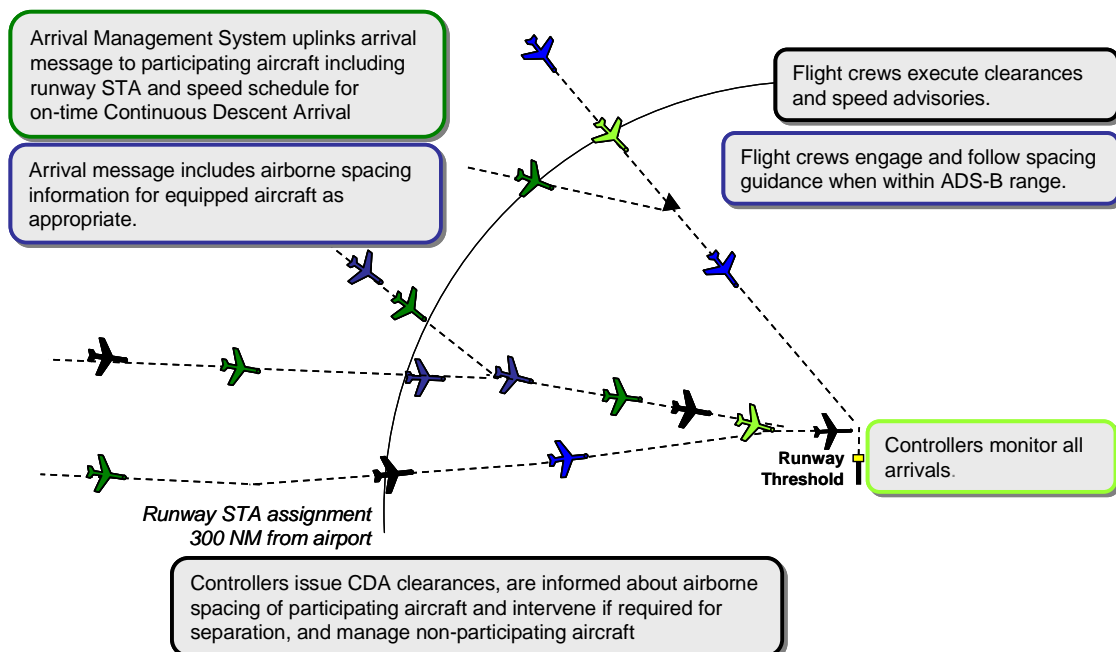


Figure 2: Concept of operations for managing arrivals during simulation

### Time-based Arrival Management

The arrival management system was prototyped to generate a runway schedule for all aircraft. All aircraft were planned to land on one runway (SDF-17R). The scheduled times of arrival (STA) were determined based on their estimated times of arrival (ETA) and the minimum required wake vortex spacing at the runway threshold. The ETAs were computed based on the aircraft's flight plan routing, a charted CDA, ADS-B reported state information and an airline supplied cost index. The minimum spacing between aircraft was computed in seconds by applying the standard wake separation matrix through the simulated wind fields and adding a 5 second buffer. The resulting desired spacing intervals between aircraft were 90, 105, and 130 seconds, depending on lead/trail weight class combination.

Whenever a participating aircraft reached 300 nm from the airport the arrival management system assigned ("froze") the STA and computed a cruise/descent speed profile that would get the aircraft to the runway on time while flying the CDAh. If the aircraft was equipped for airborne spacing the arrival management system would further examine whether the scheduled lead aircraft was appropriately equipped and within range to conduct airborne merging and spacing operations. During the simulations the arrival management system automatically created the schedule and data linked an "arrival message" to all participating aircraft at the 300 nm arc (see Figure 2).

### Arrival Message

The arrival message was a key feature of the concept implementation. This message contained the destination airport, the scheduled runway and scheduled time at the runway, and the cruise descent speed schedule. If appropriate it also contained the lead aircraft, the assigned spacing interval and the merge point with the lead aircraft as shown in the example on the left side of Figure 3.

The arrival message includes various elements that can aid flight crews in setting up their on-board systems for an on-time arrival with minimum spacing. Depending on available aircraft equipage the

"SDF ARRIVAL UPS913  
 17R AT 17:03:20 UTC  
 CRZ .78 DES .78/275  
 LEAD: UPS907  
 MERGE PT: CHERI  
 SPACING: 105 SEC"

"SDF ARRIVAL UPS913  
 17R AT 17:03:20 UTC  
 CRZ .78 DES .78/275"

Figure 3: Example Arrival Messages.

STA at the runway could be used as a Required Time of Arrival (RTA). Alternatively in this simulation the cruise/ descent speed schedule was loaded into the Flight Management System to plan and fly an on-time CDA. If included, the spacing information lets flight crews manage airborne merging and spacing operations.

### Flight Deck Operations

Flight crews were expected to use the arrival message to plan and manage their CDA and, if applicable, merging and spacing operations. Figure 4 shows the CDAs used for this study, which were initially drafted at NASA Langley Research Center [21].

Flight crews could expect to merge behind a lead aircraft at any one of the various high and low altitude merge points. Upon loading the spacing information into their on-board automation flight crews were expected to identify the lead aircraft and decide whether and when to engage spacing.

For a successful merge the lead aircraft had to fly direct to the merge point. Even though the software logic included a heading check for the lead aircraft, pilots still had to consider the geometry in

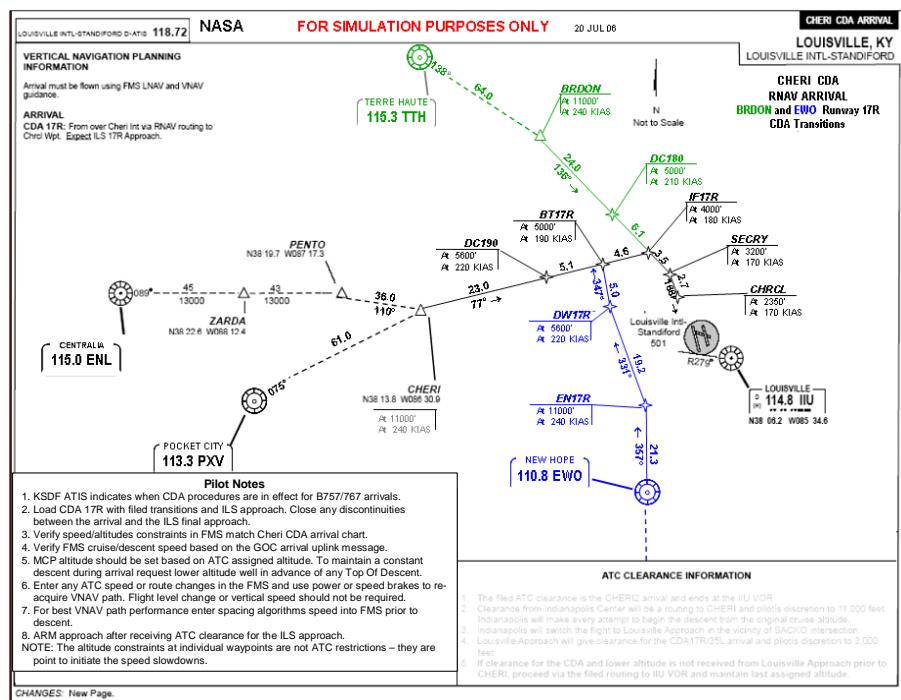


Figure 4: Continuous Descent Approach (CDA) used during simulation



assessing whether to engage/disengage the algorithm. When engaging or disengaging spacing, and upon sector check-in, pilots informed the controllers about their spacing status.

### Air Traffic Control Operations

Air traffic controllers in this simulation had the same responsibilities as they have today. They were responsible for ensuring safe separation between all aircraft and workload permitting, for expediting the flow of traffic and provide additional services. Nevertheless the controllers' role was different with regard to managing arrivals. While they were expected to actively control the non-participating arrivals they were encouraged to let participating arrivals (i.e. all UPS arrivals) manage their own speeds, provide CDA clearances whenever possible, and intervene only if necessary for separation. Non-participating aircraft, dense crossing traffic, and transitioning traffic were expected to be major challenges for the controllers.

Four air traffic control sectors covering the

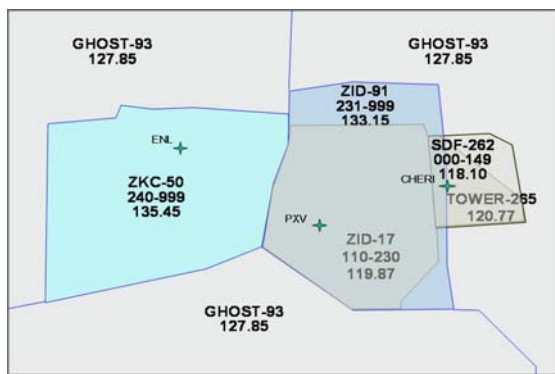


Figure 5: Sector map of test airspace

most challenging portions of the eastbound arrivals into Louisville were selected as test sectors and adapted for the simulation needs as shown in Figure 5. A Kansas-City Center high altitude sector labeled 'ZKC-50' managed mostly crossing traffic/high altitude merges and initiated the descent for most Louisville arrivals. The Indianapolis Center sector labeled 'ZID-91' managed potential merges at PXV, the transition of SDF arrivals from high altitude to FL 240, as well as departures arrivals and crossing traffic from other airports. The low altitude sector 'ZID-17' cleared SDF arrivals along the CDA into the TRACON, and acted as the gatekeeper for the TRACON corner post CHERI. In addition the low altitude controller managed regional traffic including slow flying internal departures and arrivals in the area. The Louisville TRACON was combined as one sector with the controller working feeder and final simultaneously. Confederate "ghost" controllers staffed the positions surrounding the test airspace to direct aircraft in and out of the test sectors.

## Experimental Design

The experiment was designed according to the 2x3 test matrix in Table 1 resulting in a total of six conditions that were each run twice with similar traffic scenarios. Therefore, twelve data collection runs were conducted, each approx. 75 minutes long. The sequence of runs is also shown in Table 1.

Table 1 : Test Matrix

Ground \ Air	FMS/CDA	+Airborne Spacing
Arr. Mgt. Sys.	3, 12	6, 9
+ ATC Tools	5, 8	2, 11
+ Data link	1, 10	4, 7

### Airborne Spacing

The availability of airborne spacing for 70 % of aircraft including all pilot participants was one independent variable in the simulation used during half of the data collection runs. The implemented spacing algorithm was based on the Eurocontrol CoSpace logic [22]. The logic was configured to allow speed increases and decreases in 5 knot increments. In the current day flight deck condition all participating aircraft were assumed to have flight management system capabilities and integrated data link communication. The data link, however could only be exercised in the data link ground condition.

### ATC Tools and Data Link

The second independent variable was the availability of advanced ATC automation on the controller position and whether this automation was integrated with controller pilot data link communication.

In all ground-side conditions the Arrival Management System was operating automatically in the background without operator inputs. In the condition labeled "Arr. Mgt. Sys." controllers were presented with an accurate emulation of their current day displays with no additional tools or information about spacing or scheduling status of aircraft. In the condition labeled "+ATC-Tools" controllers had access to a Louisville runway timeline display, speed advisories, a medium term conflict probe, a fast trial planning function and spacing status information in the data tag and on the display. The scheduling and spacing information was shared between the arrival management system and the air traffic controller display. This means that controllers had access to the scheduled time of arrival, assigned lead aircraft and spacing interval as determined by the automation. The ATC condition labeled "+Data Link" provided controllers with access to the same toolset as the ATC Tools condition, but enabled issuing trial planned route and altitude changes to equipped

aircraft via CPDLC as well as automated transfer of communication. Data link also provided Center controllers with an easy way of sending the automatically generated schedule-based speed advisories to equipped arrivals. The tools and data link integration are described in detail in [19].

### Participants

Four radar certified air traffic control specialists from three Air Route Traffic Control Centers and one Terminal facility in the United States participated in the study, as well as eight airline pilots, three of whom were active UPS pilots. Recently retired controllers operated the ghost controller positions and general aviation pilots served as multi aircraft pilots.

### Traffic flows

The traffic flows were an extended nighttime eastbound arrival push through busy daytime crossing traffic generated from a live traffic feed in the same airspace. The two traffic scenarios used in each of the conditions caused slightly different traffic loads in the test sectors. Figure 6 show the number of aircraft “owned” by each test controller over time for two runs that are representative of the two scenarios.

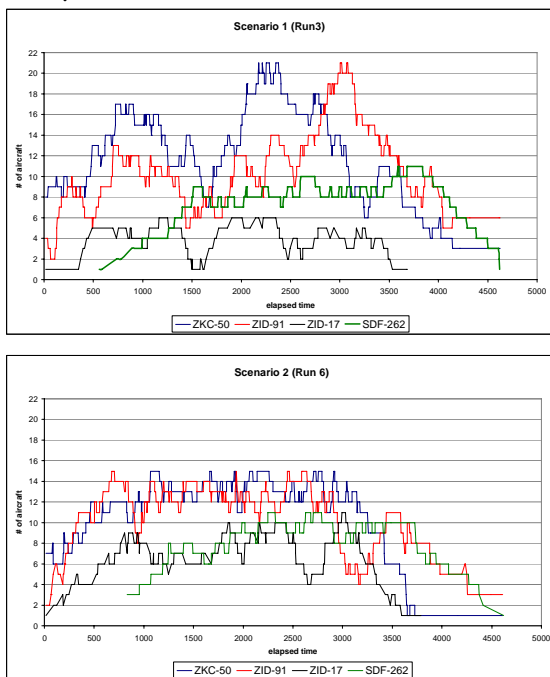


Figure 6: Traffic loads for the two scenarios

Scenario 1 has several peak traffic loads of 20 or more aircraft for the two high altitude sectors ZKC-50 and ZID-17. Scenario 2 on the other hand has a very steady traffic load of 12 – 14 for the high altitude sectors. The low altitude sector (ZID-17) has a generally low traffic load, but some

complexities built in. The approach controller in SDF-262 gets busy after 15 minutes and has 8 to 12 aircraft under his/her control until the scenario winds down.

### Results

The results in this section are divided into general results related to the general effectiveness of the arrival management concept, the impact of airborne spacing on the arrival flow and the impact of the ATC tools and data link on the system performance.

### Controller Workload

At the onset of the study it was expected based on some prior research that either airborne spacing or the availability of controller tools would have some impact on controller workload. Workload was measured during the runs with integrated workload assessment keypads that lit up every 5 minutes and prompted controllers to assess their workload on a scale of 1 (very low) to 7 (very high). Analysis of the data for all four test sectors showed no significant differences between conditions. The introduction of controller tools or data link for a subset of aircraft had no obvious impact on controller workload as well as the use of airborne spacing. Instead the workload curves follow primarily the number of aircraft that the controller owns in the sector, which is consistent

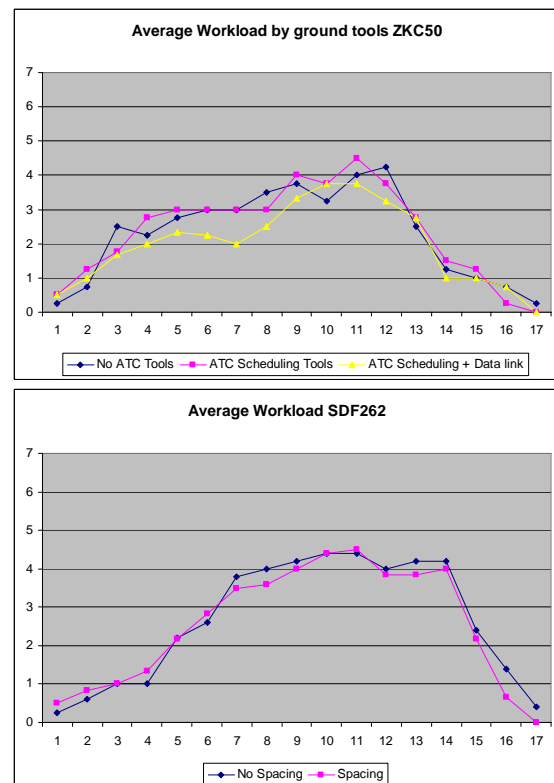


Figure 7: Average controller workload

with earlier research. As examples, Figure 7 depicts the average workload of ZKC-50 under different ATC conditions and the average workload of the approach controller SDF262 for runs with and without airborne spacing.

### Safety

To estimate the safety of the operations, occurrences of separation violations for all conditions in the Center airspace were analyzed. The analysis of the approach airspace is not yet complete due to the added complexities of minimum separation rules in approach airspace.

**Table 2 Separation violations by condition. The 1<sup>st</sup> value refers to violations lasting for at least 12 seconds (RADAR sweep), the 2<sup>nd</sup> value to violations of less than 12 seconds.**

Air Ground	FMS CDA	+Airborne Spacing	Total
Arr. Mgt. Sys.	1 (1)	0 (3)	<b>1 (4)</b>
+ATC Tools	0 (1)	1 (2)	<b>1 (3)</b>
+Data link	0 (1)	0 (1)	<b>0 (2)</b>
<b>Total</b>	<b>1 (3)</b>	<b>1 (6)</b>	

It should be noted that only one separation violation involved a Louisville arrival. The majority of separation violations lasted for less than 12 seconds and might not have been registered by current day RADAR-based systems. However, since the simulation's data collection system receives 1 second track updates, these were logged similar to what would be expected if ADS-B data was used in ground systems. Overall safety did not seem to be significantly impacted by either spacing operations or ground side conditions.

### Effects of airborne spacing

To analyze the effect of airborne spacing in more detail only the participating aircraft that conducted airborne spacing in the airborne spacing condition were analyzed. Each of them was compared to their counterpart in the conditions without airborne spacing.

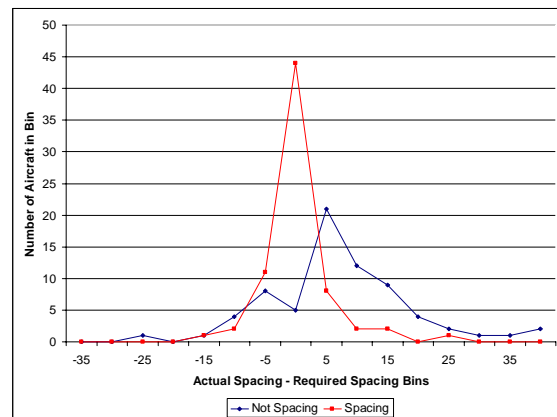
Since the goal of airborne spacing is to achieve spacing relative to the lead aircraft, the actual spacing intervals at the runway were compared to the required spacing intervals derived from the wake vortex matrix as described earlier in this paper.

Figure 8 shows a histogram depicting the difference between the actual spacing and the required spacing for those aircraft that were actively spacing in the spacing conditions and scheduled at their minimum spacing intervals. Also shown is a histogram for those same aircraft during conditions without airborne spacing.

The comparison shows a significant difference in mean and variance for those two conditions ( $t(70) = 3.95, p < 0.001, F(70,70) = 8.38, p < 0.001$ ).

**Table 3: Inter-arrival spacing error of participating aircraft**

	FMS CDA	+Airborne Spacing
Spacing error (seconds)	<b>6.3 (15.6)</b>	<b>-1.5 (5.4)</b>



**Figure 8: Spacing error at the runway.**

These results are consistent with other findings from related airborne spacing research. Airborne spacing can reduce the spacing variability and excess spacing on final by a small, but significant margin, enabling one or two more aircraft to land per hour. In this study the arrival management system already did a very good job in scheduling and spacing the aircraft.

### Arrival Time Errors

The arrival management concept using an automated system to send information to participating aircraft proved very effective in all conditions. This is demonstrated in the small arrival time errors for participating aircraft in all conditions. The arrival time error is defined as the difference between the actual time of arrival (ATA) at the runway scheduling point and the STA. Early arrivals have a negative sign. Since it was expected that participating and non-participating aircraft would cause different results, the analysis is split between those categories. The 80% UPS vs. 20 % non-UPS arrival design resulted in sample sizes of 40 participating aircraft per condition and 10 non-participating aircraft per condition.

Table 4 shows that on average all participating aircraft arrived in all conditions at their scheduled time with a mean error between -7.8 and +13 seconds and a standard deviation ranging from 11.1 to 53 seconds. A two-tailed pair-wise t-test reveals that the mean reduction from the FMS/CDA to the

FMS/CDA with airborne spacing condition was marginally significant ( $t(124) = 1.8; p < 0.07$ ). Since airborne spacing controls the relative time behind the lead aircraft and not the absolute time a trailing aircraft relies on its lead to meet the scheduled time. During the simulation typically all airborne spacing aircraft within a chain arrived a few seconds early or a few seconds late. This explains the same overall variance as the non-airborne spacing aircraft for the absolute arrival time error, while mean and variance for the relative spacing error were significantly reduced.

**Table 4: Arrival time error of participating (all UPS) aircraft (Mean and standard deviation in seconds).**

Air Ground	FMS CDA	+Airborne Spacing	Total
Arr. Mgt. Sys.	-2.2 (30.4)	3.3 (53.0)	<b>0.5</b> <b>(43.0)</b>
+ATC Tools	4.1 (15.6)	-7.8 (11.1)	<b>-1.8</b> <b>(14.7)</b>
+Data link	13.0 (37.4)	-0.02 (24.7)	<b>6.5</b> <b>(32.1)</b>
<b>Total</b>	<b>5.0</b> <b>(29.8)</b>	<b>-1.56</b> <b>(34.7)</b>	

Examining the ground tools conditions, a variance analysis shows that ATC tools reduce the arrival time variability significantly over the current day condition even for participating aircraft ( $F(83,81) = 8.53, p < 0.001$ ). This indicates that the ATC tools enabled controllers to further fine-tune the arrival flow prepared by the arrival management system. Surprisingly, the controller tools integrated with data link did not show a similar impact as the ATC tools condition. An explanation requires further analysis.

For non-participating aircraft (i.e. aircraft that did not receive an arrival message), it was expected that the controller tools would enable on-time performance and airborne spacing would be without impact. Table 5 confirms these trends.

**Table 5: Arrival time error of non-participating (all non-UPS) aircraft (Mean and standard deviation in seconds)**

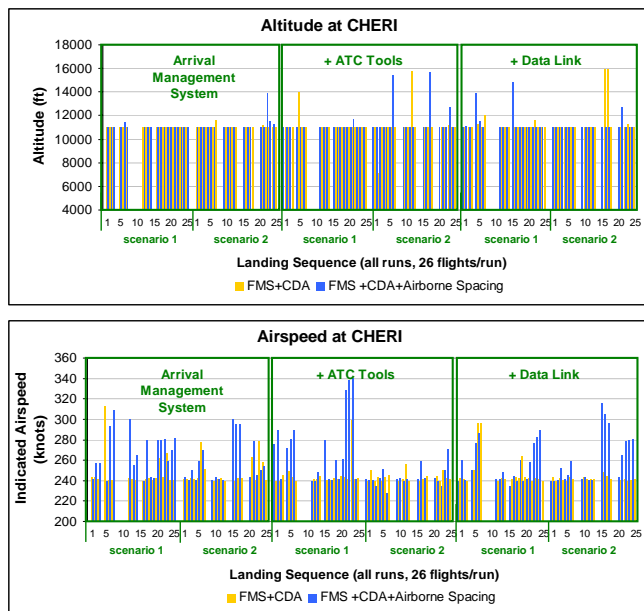
Air Ground	FMS CDA	+Airborne Spacing	Total
Arr. Mgt. Sys.	-26.2 (52.8)	-28.7 (55.5)	<b>-27.3</b> <b>(50.3)</b>
+ATC Tools	-2.1 (27.2)	-0.8 (18.8)	<b>-1.5</b> <b>(22.7)</b>
+Data link	-2.9 (26.0)	-0.7 (33.3)	<b>-1.8</b> <b>(29.1)</b>
<b>Total</b>	<b>-10.4</b> <b>(37.9)</b>	<b>-9.75</b> <b>(37.7)</b>	

As expected airborne spacing of other aircraft had no impact on non-participating aircraft.

However without controller tools non-participating aircraft arrived on average 26 seconds earlier than in the tools condition ( $t(23) = -2.1, p < 0.047$ ) with a much larger variability ( $F(18,39) = 3.8, p < 0.001$ ). The early arrival is explained in that the scenario had some non-participating aircraft at the beginning of a bank of aircraft. Without additional information controllers tended to speed up aircraft that have no lead to generate gaps for following arrivals. With scheduling tools controllers understood the schedule and saw no need for speeding up the aircraft. The schedule compliance of non-participating aircraft in the tools and the data link conditions was equivalent to the performance of participating aircraft. This indicates that given the appropriate toolset controllers can implement the schedule, the arrival management system can implement it, or both can work together. Any of these options should cause on-time arrival improvements over current day operations.

### Energy Management along the CDAs

One of the known fundamental problems in conducting CDAs in high density airspace is energy management. Late descents and speed changes during descent cause problems with meeting downstream altitude and speed restrictions. For an initial look at potential energy management issues during the simulation the data set used before for analyzing the effects of airborne spacing was further reduced to include only those aircraft that flew along the CHERI transition shown in figure 4.



**Figure 9: altitude and speed at CHERI**

Figure 9 shows the raw data for crossing altitude and speed for the current day, ATC tools and data link condition from left to right. In many



cases the altitude is within the acceptable range of 200 from the nominal altitude of 11000 ft. Extreme altitude peaks of up to 16000 feet indicate a problem likely related to getting a late descent clearance because of traffic. In contrast to the altitude, the speeds are more widely distributed. Pilots and controllers were briefed that in airborne spacing they would not have to comply with the crossing speed at CHERI.

An important question regarding speed and altitude status along CDAs is the impact on the energy and whether the CDA can be continued without too much throttle or speed brake usage. To examine the energy status, the weight-independent specific energy was computed for each aircraft by adding the potential (altitude-related) and the kinetic (speed-related) specific energy. As a reference value the CDA-prescribed specific energy was computed for the nominal crossing condition (here 240 knots and 11000 feet). The resulting “relative energy” for CHERI is shown in Figure 10 with the actual values in percent of the nominal specific energy. The data represents the same aircraft as figure 9 and illustrates the energy status resulting from the altitude/speed non-compliance.

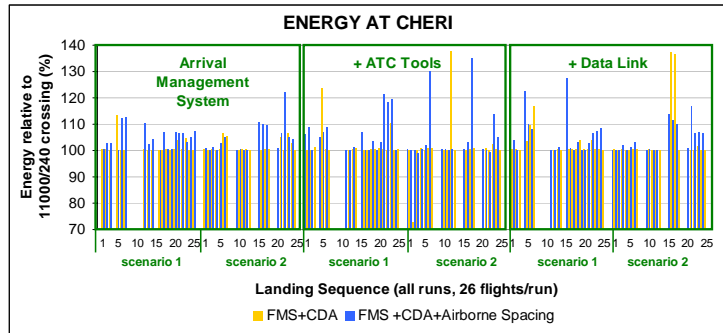
The relative energy at CHERI was further analyzed by conditions. Table 4 shows the result for this subset of aircraft.

**Table 4: “Relative Energy” at CHERI (% of the nominal specific energy)**

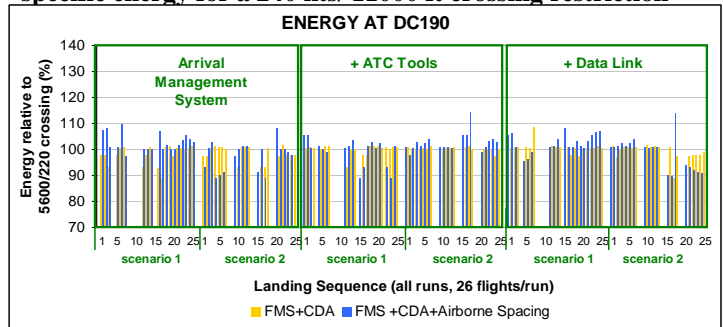
Air Ground	FMS	Airborne Spacing	
Arr. Mgt. Sys.	102.2 (2.5)	107.4 (5.1)	<b>104.8 (4.7)</b>
+ATC Tools	102.5 (5.3)	109.1 (10.0)	<b>105.6 (8.6)</b>
+Data link	104.4 (8.9)	107.5 (6.1)	<b>105.9 (8.1)</b>
	<b>102.9 (6.1)</b>	<b>108.0 (7.7)</b>	

Aircraft conducting airborne spacing had a significantly higher relative energy mean at CHERI ( $t(58) = 4.2$ ;  $p < 0.001$ ). Hardly any aircraft was low on energy, which is typical at the first crossing restriction after an idle descent. This particular CDA was designed to absorb some extra energy after CHERI and included a nominally low power descent segment to the next waypoint “DC190”

Figure 11 illustrates the relative energy of the same aircraft at the CDA point DC190. Only some extremely high energy levels from CHERI are



**Figure 10: Relative energy at CHERI. Percentage of the specific energy for a 240 kts/ 11000 ft crossing restriction**



**Figure 11: Relative energy at DC190. Percentage of the specific energy for a 220 kts/ 5600 ft crossing restriction**

carried over. Also at this point the airborne spacing logic commanded several slow downs as well as speed ups, increasing the energy variability in both directions for the airborne spacing condition.

It is important to note that the data trends shown here may very well be an exaggeration of a real world implementation of airborne spacing. The particular implementation of this spacing algorithm used in the simulation was not as sophisticated as newer versions of the Eurocontrol Co-Space algorithm or the trajectory-based algorithm developed at NASA Langley. Nonetheless, as all controller and pilot participants in the study pointed out repeatedly, energy management is a major problem in conducting CDAs in high density traffic.

## Conclusion

An air/ground simulation of a site specific implementation of trajectory oriented operations with limited delegation was conducted in September 2006. This paper discussed some aspects of the ongoing data analysis. The results indicate that it is possible to conduct continuous descent arrivals in high density airspace. Airborne spacing has a positive effect on runway throughput and no negative impact on on-time arrivals. The highly automated arrival management concept was very effective in all conditions. Energy management remains a primary issue to be addressed.

## Acknowledgments

The researchers greatly appreciate the help provided by John Marksteiner of the FAA's Surveillance and Broadcast Services Office, and Captain Bob Hilb of UPS Airline, in providing controller and pilot participants for this simulation. We would like to thank the entire M&S group led by Randy Bone and Peter Moertl of MITRE, and Dave Williams at NASA Langley Research Center.

## References

- [1] JPDO, 2006 *Next Generation Air Transportation System*, URL: <http://www.jpdo.aero/factsheet.html>
- [2] JPDO, 2006 *Concept of Operations for the Next Generation Air Transportation System, Draft version 0.2*, July 24, 2006.
- [3] SESAR Consortium, Eurocontrol 2006 *Air Transport Framework, The Performance Targets D2*, URL: <http://www.eurocontrol.int/sesar/gallery/content/public/docs/DL-M-0607-001-02-00a.pdf>
- [4] Graham, R., E. Hoffmann, C. Pusch, and K. Zeghal, (2002, 2003) *Absolute versus Relative Navigation: Theoretical Considerations from an ATM Perspective*, ATM2003, FAA/Eurocontrol R&D Seminar, Budapest, Hungary
- [5] Prevot T., P. Lee, T. Callantine, N. Smith, and E. Palmer (2003) *Trajectory-Oriented Time-Based Arrival Operations: Results and Recommendations*, ATM2003, FAA/Eurocontrol R&D Seminar, Budapest, Hungary
- [6] Prevot, T., T. Callantine, P. Kopardekar, N. Smith, E. Palmer, V. Battiste (2004). *Trajectory-Oriented Operations with Limited Delegation: An Evolutionary Path to NAS Modernization*. AIAA 4th Aviation Technology, Integration and Operations (ATIO) Forum, Chicago, IL, September 2004, AIAA-2004-6449
- [7] Prevot T., Battiste V., Callantine T. Kopardekar P., Lee P., Mercer J., Palmer E., Smith N. (2005) *Integrated Air/Ground System: Trajectory-Oriented Air Traffic operations, Data Link Communication, and Airborne Separation Assistance* Air Traffic Control Quarterly Volume 13, Number 2 Special Issue on ASAS, pp. 201-229, (Francis Casaux Editor)
- [8] Prevot T., Callantine T, Lee P, Mercer J, Battiste V, Johnson W, Palmer E and N Smith (2005) *Co-Operative Air Traffic Management: A Technology Enabled Concept for the Next Generation Air Transportation System*. 5<sup>th</sup> USA/Europe Air Traffic management Research and Development Seminar, Baltimore, MD, June 2005
- [9] JP Clarke et al. *Development, design, and flight test evaluation of a continuous descent approach procedure for nighttime operation at Louisville International Airport*. January 9, 2006. (Report No. PARTNER-COE-2005-02)
- [10] Wichman, Carlsson, Lindberg (2002) *Flight Trials: "Runway-to-Runway" Required Time of Arrival Evaluations for Time-Based ATM Environment- Final Results*. AIAA-GNC 2002, Monterey, CA, AIAA 2002-4859,
- [11] ATH Group (2007) *ATILLA* <http://www.athgrp.com/attila.html>
- [12] Mead, R. (2006) *Industry initiative promises fuel savings, environmental benefits and greater safety*. ICAO Journal, Volume 61, Number 4, 2006. pp. 7-10, 31. Montreal, Canada.
- [13] Moertl, P., E. Beaton, R. Bone (2005). *Airline Based Sequencing and Spacing Concepts for Managing Arrivals: Integration of Ground and Airborne Tools*. Aircraft Dispatchers Convention, October 9-11, 2005, Washinton, DC.
- [14] Erzberger, H., T.J. Davis, and S.M. Green, 1993, *Design of Center-TRACON Automation System*, AGARD Meeting on Machine Intelligence in Air Traffic Management, Berlin, Germany, May, and <http://ctas.arc.nasa.gov>
- [15] Eurocontrol (2005) *A Summary report of the EVP AMAN Rome real time simulation 2004* EEC Note No. 17/05 URL: [http://www.eurocontrol.int/eec/gallery/content/public/documents/EEC\\_notes/2005/EEC\\_note\\_2005\\_17.pdf](http://www.eurocontrol.int/eec/gallery/content/public/documents/EEC_notes/2005/EEC_note_2005_17.pdf)
- [16] Callantine, T., P. Lee, J. Mercer, T. Prevôt, E. Palmer, 2005, *Simulation of Terminal-Area Flight Management System Arrivals with Airborne Spacing*, Air Traffic Control Quarterly, Vol. 14, No. 1, pp. 47-67.
- [17] Barmore, B., T. Abbott, and K. Krishnamurthy, 2004, *Airborne-managed spacing in multiple arrival streams*, Proceedings of the 24<sup>th</sup> International Congress of the Aeronautical Sciences, Yokohama, Japan.
- [18] Grimaud I, Hoffmann E., Rognin L. and Zeghal K (2004) *Spacing instructions in approach: Benefits and limits from and air traffic controller perspective*, AIAA 2004-5105, AIAA GNC conference, Providence, RI
- [19] Prevot, T., N. Smith, E. Palmer, J. Mercer, P. Lee, J. Homola, T. Callantine, 2006, *The Airspace Operations Laboratory (AOL) at NASA Ames Research Center*, AIAA-2006-6112, AIAA, Reston, VA.
- [20] Johnson W. and V. Battiste (2006) *NASA Ames Flight Deck Display Research Laboratory* URL: <http://human-factors.arc.nasa.gov/ihh/cdti/index.html>
- [21] Dave Williams (2006) Louisville CDAs email exchange
- [22] Eurocontrol Experimental Centre (2006) *Flight Deck Requirements for Airborne Spacing (Sequencing and Merging)* (Version 2.1 was used) URL: [http://www.eurocontrol.int/eec/gallery/content/public/documents/EEC\\_SSP\\_documents/CoSpace/2006/Sequencing\\_and\\_merging\\_FD\\_URD\\_2-3.pdf](http://www.eurocontrol.int/eec/gallery/content/public/documents/EEC_SSP_documents/CoSpace/2006/Sequencing_and_merging_FD_URD_2-3.pdf)

## Keywords

airborne spacing, arrival management, FMS operations, continuous descent arrivals

## Author Biographies

Dr. Thomas Prevôt earned his doctorate in Aerospace Engineering from the Munich University of the German Armed Forces. He has been developing advanced ATM capabilities at NASA Ames Research Center for the past eleven years.

Dr. Todd J. Callantine earned his Ph.D. at the Georgia Institute of Technology, and has conducted ATM research at NASA Ames Research Center for the past ten years.

Jeff Homola works in the NASA Ames Human-Systems Integration Division and is completing his M.S. degree at San Jose State University.

Dr. Paul U. Lee is a NASA Ames human factors researcher who earned his Ph.D. in Cognitive Psychology from Stanford University.

Joey Mercer works in the NASA Ames Human-Systems Integration Division and is completing his M.S. degree at San Jose State University.

Nancy Smith is a Research Psychologist at NASA ARC. She holds a Master's degree in Human Factors Engineering from San Jose State University.

Dr. Everett Palmer conducts human factors research at NASA Ames. He earned B.S., M.S. and Ph.D. degrees in Electrical and Industrial Engineering from Stanford University.